



community foundation

2017 ANNUAL REPORT



LET'S GIVE
IT FORWARD
TOGETHER.



MATCHING YOUR PASSION WITH PURPOSE



Throughout 2017, we celebrated our 25th anniversary – honoring our history and celebrating the community impact we’ve accomplished together with our donors, nonprofits and community partners. We received more than \$2 million in gifts and awarded \$2.5 million in grants and scholarships throughout the five county region. Because of your generosity, we are collectively creating impact and lasting change in our communities.

Today, we are poised for the next 25 years and beyond. We are focused on setting goals and priorities to drive our work forward. We remain committed to providing dynamic and excellent services for donors, impactful grants to support local nonprofits and collaborative leadership around community initiatives.

In the pages that follow, you’ll find stories of the work we do and how we do it. At the core of all that we do is the why – we love our communities and we want to see them thrive, forever. In all of this, we are committed to serving as your local giving partner and are focused on supporting strong, vibrant and healthy communities both now and for the future.



Virg Mouch
Board Chairman



David Mengebier
President and CEO





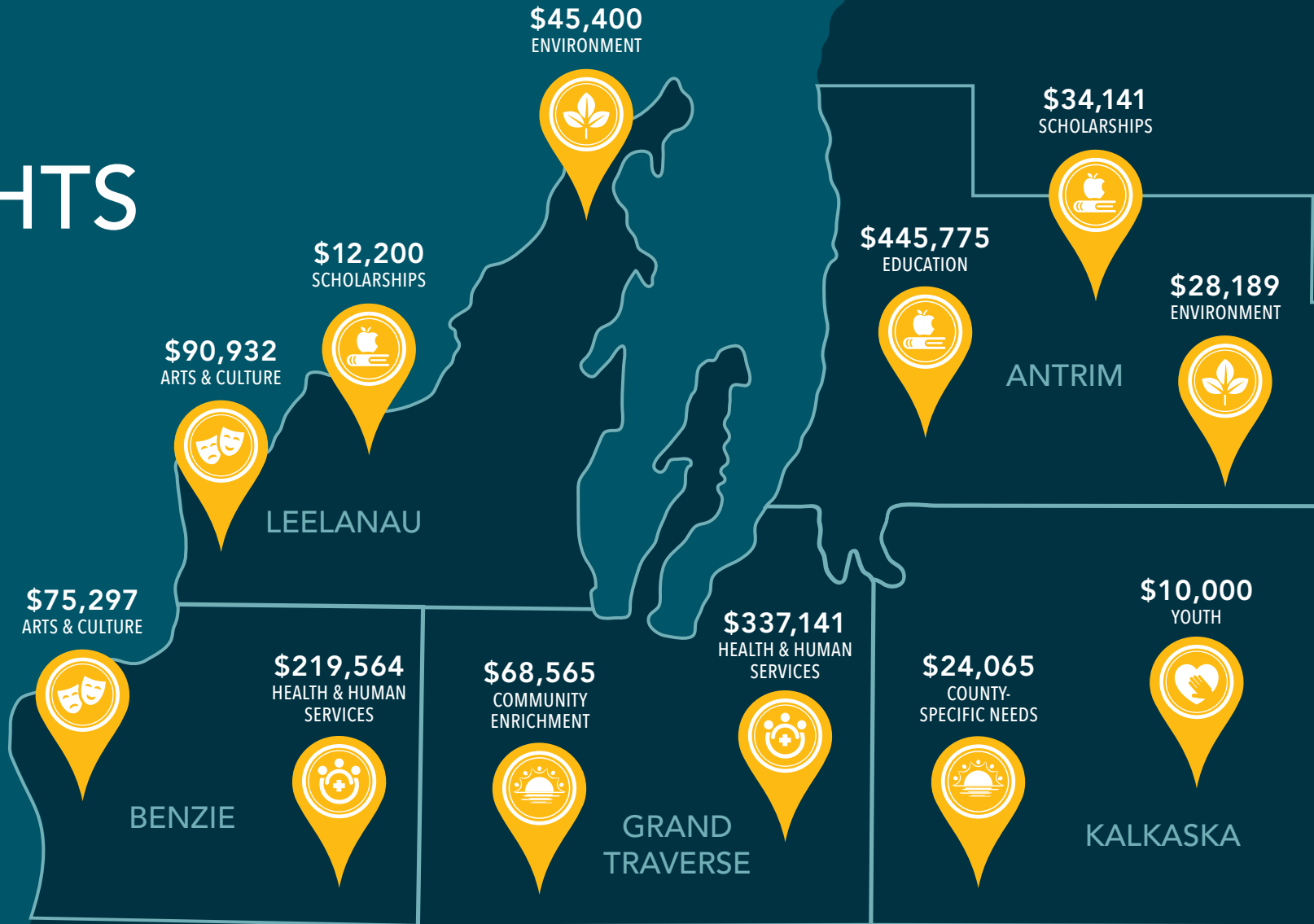
community foundation

2017 IMPACT HIGHLIGHTS BY COUNTY

\$2.6M
TOTAL GIFTS

\$2.5M
TOTAL GRANTS

\$61M
TOTAL ASSETS



AREAS OF COMMUNITY NEED



ARTS & CULTURE



EDUCATION



ENVIRONMENT

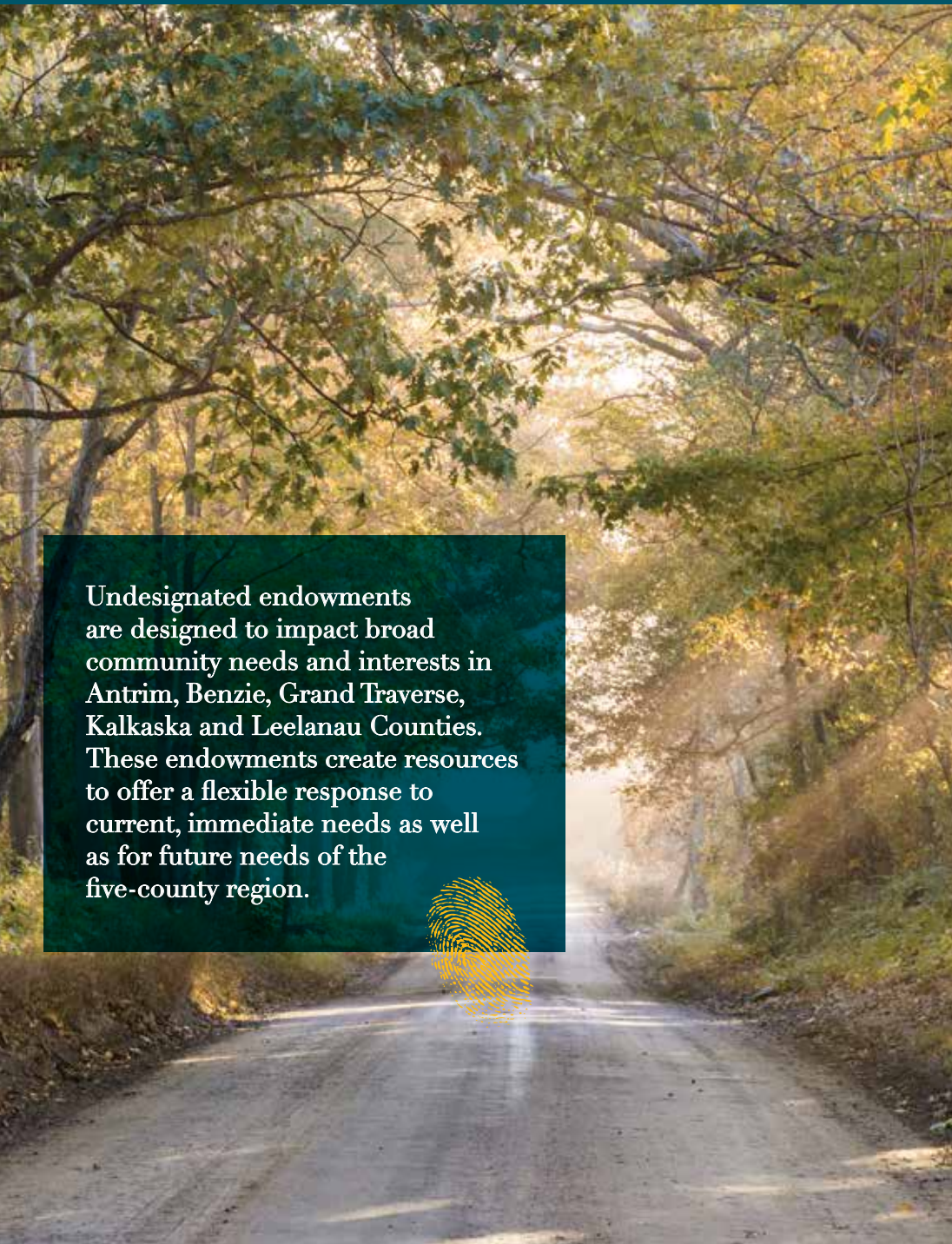


HEALTH & HUMAN SERVICES



YOUTH

WE LOOK FOR OPPORTUNITIES TO MAKE OUR COMMUNITY MORE VIBRANT AND IMPROVE THE QUALITY OF LIFE.



Undesignated endowments are designed to impact broad community needs and interests in Antrim, Benzie, Grand Traverse, Kalkaska and Leelanau Counties. These endowments create resources to offer a flexible response to current, immediate needs as well as for future needs of the five-county region.



FOCUS Fund Endowment
Central Lake Crock Pot Meal Program



“This class was developed as a way to both provide food and promote healthier eating and cooking. Yet, the true value we have seen is that guests have an opportunity to build relationships and community.”

– Gary Bekkering, Pastor, First Congregational Church of Central Lake

The team at the First Congregational Church of Central Lake began to notice that many of the guests of their food pantry did not know how or have a way to prepare food available in the pantry. The Cooking with Crockpots Class was launched with support of grant funds to provide crockpots and supplies for participants. Participants received a crockpot, as well as the recipes and food needed to prepare the meal at home.

The FOCUS Fund Endowment was created in 2010 to impact diverse community needs. Supported with gifts large and small by many local donors, more than \$125,000 has been awarded back to our communities.



Hallie Olson Wastell – Hallie’s Hearts Endowment

Hallie lived with a fun-loving, courageous luminescence that brought goodwill to her life, family, friends and the good of others. She died in 2016, after a four-year fight with ovarian cancer, during which she was a constant torchbearer for the fight against this disease.



“From the day Hallie was diagnosed, she began to share her story, building a circle of support that connected many people. We know how much it meant to her to help other women and families walking through and experiencing ovarian cancer. This endowment is a way for Hallie’s voice to continue to be heard.”

– Jessica Olson, Hallie’s sister

Hallie’s Hearts Endowment, created in memory of Hallie Olson Wastell, provides support for public education to increase awareness of ovarian cancer and funding for women with the disease in Northern Michigan. Grant awards for this purpose will be made to Munson Medical Center’s Cowell Cancer Center.

WE GRANT TO ORGANIZATIONS THAT ARE MAKING LIFE BETTER IN OUR REGION.

Established in 1997, in partnership with the C.S. Mott Foundation and the Grand Traverse Regional Land Conservancy, this Endowment provides support for land use planning and stewardship activities. More than \$340,000 has been awarded from this endowment, supporting programs, projects and organizations throughout the region.



“Support for preliminary design work is crucial to ensuring the success of trail projects and connections – it provides opportunity for public outreach and input and builds the foundation for bringing the vision to life.”

– Julie Clark, Executive Director, TART Trails

Land Use and Conservation Planning Endowment

TART Trails



The Traverse City to Charlevoix Trail is an ambitious effort to connect two regional trail networks that link Traverse City, Acme, Elk Rapids, Eastport, Norwood and Charlevoix. This project builds on the vision of more than a decade of local groups working to make trail and community connections.

WE HELP PEOPLE MAKE LONG TERM INVESTMENTS IN CAUSES THAT MATTER MOST TO THEM.



We engage in collaborative leadership around efforts that can have transformational impact for our region. We look for opportunities to leverage the unique role of philanthropy, participate in and support existing efforts, and convene and connect diverse stakeholders and partners.



“We are committed to collaboratively participating in efforts to build communities of health and well-being. We envision our region as a model for collaboration, innovation and participation of all sectors - focused on building health as a shared value and driving healthier, more equitable communities.”

– David Mengebier, GTRCF President and CEO



WE BELIEVE IN IMPROVING LIVES IN OUR REGION BECAUSE, JUST LIKE YOU, WE LOVE OUR COMMUNITIES. WE KNOW THAT ALL DONORS AND ALL GIFTS CAN HAVE A MEANINGFUL IMPACT. TOGETHER, WE MAKE ALL THE DIFFERENCE FOR OUR COMMUNITIES TODAY AND FOR THE FUTURE.



What lasting impression will you create?

BETTER GIVING FOR A BETTER FUTURE



At the Community Foundation, we partner with donors to create long term gifts that, in turn, allow us to award grants to the organizations that are making life better in our region. We are proud stewards of donor wishes thanks to the leadership of an experienced staff and our Board of Directors who, together, ensure we efficiently manage our resources and effectively award meaningful grants.



BOARD OFFICERS

Virg Mouch, Chairman, *Antrim County*
Roger Perry, Vice-Chairman, *Benzie County*
Amy Schindler, Secretary, *Benzie County*
Beth Dunckel, Treasurer, *Grand Traverse County*

BOARD OF DIRECTORS July 1, 2017 – June 30, 2018

ANTRIM COUNTY

Amy Burk
Mike Card
Matt Davis
Rich Hannan
Virg Mouch
Mary Peterson
Tom Wiltse

BENZIE COUNTY

Blake Brooks
Jon Hawley
Linda Kehr
Carol Marsh
Rex O'Connor
Roger Perry
Amy Schindler

GRAND TRAVERSE COUNTY

Susan Cogswell
Annie DeVries
Beth Dunckel
Bill Smith
Jeff Wonacott

KALKASKA COUNTY

Ann Neuenschwander
Janet Sieting
Troy Stobert

LEELANAU COUNTY

Ed Arbut
Sara Brubaker
Gary Hoensheid
Chuck Mueller
Carolyn "Peachy"
Rentenbach

THANK YOU

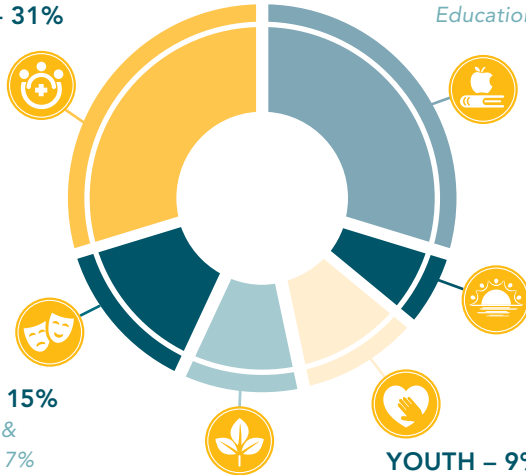
Additionally, thank you to the following individuals for their years of service on the Board:

Dale Claudepierre, Penny Hill, Wesley Jacobs, Kerry Nelson, Phillip Palajac, Pam Prairie, Lou Anna Simon, Gregg Smith and Bill Stege

STAFF

David Mengebier, *President and CEO*
Alison Metiva, *Vice President, Strategic Engagement and Programs*
Paul Kester, *Vice President, Finance and Administration*
Steve Wade, *Vice President, Gift Planning*
Jesse Wolff, *Senior Advisor, Healthy Communities*
Pam Amundsen, *Communications Officer*
Gina Thornbury, *Program Officer*
Joan Hughes, *Administrative Donor Support Services*
Katherine Palms, *Grantmaking Associate*

HEALTH & HUMAN SERVICES – 31%



EDUCATION – 31%
 Early Childhood 18%
 Scholarship 7%
 Education 6%

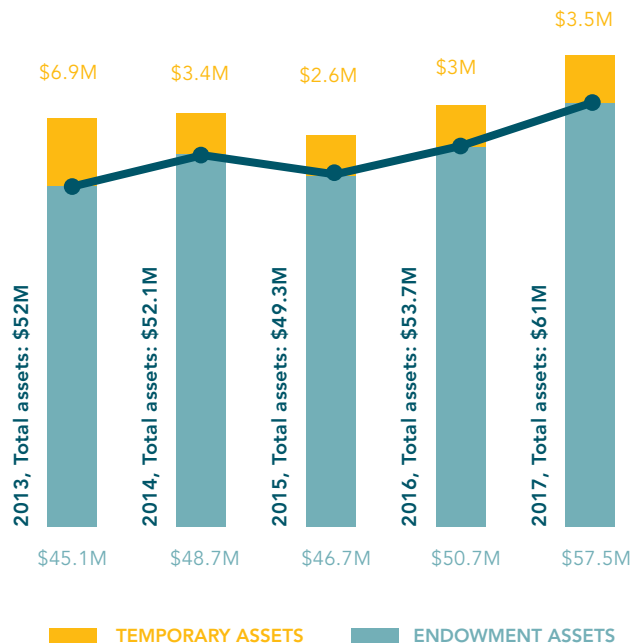
ARTS & CULTURE – 15%
 Arts, Culture & Humanities 7%
 Recreation 7%
 Religious 1%

OTHER – 6%
 Community Enrichment 4%
 Animal Welfare 1%
 Business & Economic Development 1%

ENVIRONMENT – 8%

YOUTH – 9%

HISTORY OF ASSETS



	2017	2016
Net Assets <i>beginning of year</i>	\$53,738,529	\$49,335,464
Endowment Gifts	\$ 1,377,725	\$ 2,055,154
Non-Endowment Gifts	\$ 1,313,527	\$ 1,535,178
Total Gifts	\$ 2,691,252	\$ 3,590,332
Investment & Other Income	\$ 1,720,342	\$ 1,571,198
Unrealized Market Gain or (Loss)	\$ 6,214,286	\$ 2,536,758
Total Revenue	\$10,625,880	\$ 7,698,288
Endowment Grants	\$ 1,827,246	\$ 1,604,949
Non-Endowment Grants	\$ 703,249	\$ 925,313
Total Grants	\$ 2,530,495	\$ 2,530,262
Operating Expenses	\$ 741,213	\$ 648,399
Investment Management Fees	\$ 57,815	\$ 54,902
Other Program Expenses	\$ 20,129	\$ 56,140
Other Fundraising Expenses	\$ 3,055	\$ 5,520
Total Grants & Expenses	\$ 3,352,707	\$ 3,295,223
Net Assets <i>end of the year</i>	\$61,011,702	\$53,738,529

FOUNDATION ASSETS

TOTAL ASSETS \$61M
TEMPORARY ASSETS \$3.5M
ENDOWMENT ASSETS \$57.5M



GENEROSITY FOR GENERATIONS.





community foundation

250 E FRONT STREET, STE 310
TRAVERSE CITY, MI 49684

231.935.4066

GTRCF.ORG



ANTRIM . BENZIE . GRAND TRAVERSE
KALKASKA . LEELANAU