



GRAND TRAVERSE REGIONAL
community foundation



20
21

ANNUAL REPORT



WE ARE NOT ONLY YOUR LOCAL GIVING PARTNER, BUT ALSO A LEADER YOU CAN COUNT ON TO CREATIVELY AND STRATEGICALLY RESPOND TO BOTH EMERGING AND ONGOING COMMUNITY NEEDS.

Dear Friend of the Foundation,

Thanks to community partners like you, we closed 2021 with a historic milestone, surpassing \$100 million in assets!

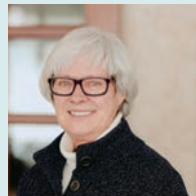
As your Community Foundation, we have been serving you, your family, and our five-county region since 1992. Throughout our 30 years, our team—both our staff and voluntary Board of Directors—has grown and strengthened partnerships with nonprofit organizations, education institutions, governmental entities, and local businesses to benefit communities across the region.

We are uniquely positioned to achieve community benefit through strategic grantmaking, meaningful scholarships, cross-sector collaborations, and by leveraging critical financial and human resources.

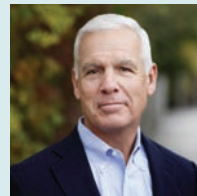
This benefit is possible because of contributions like yours that have been entrusted to the Community Foundation. The assets we steward exist because of people just like you who love this region and want to see it thrive.

And so, as we make our way through 2022, remember that we are not only your local giving partner, but also a leader you can count on to creatively and strategically respond to both emerging and ongoing community needs.

Thank you for working with us to impact our region, now and for generations to come.



Terry Beamsley
Board Chair



David Mengebier
President and CEO



3.3 **\$3.3 Million**
given back to the
community through
grants & scholarships

534
grant partners and
scholarship recipients
supported

534



WE'RE GIVING
IT FORWARD,
TOGETHER.



5.7 **\$5.7 Million**
in gifts received, ranging
from \$10 to \$2 million

\$104 Million
in assets we steward for
the benefit of our region

104





OUR MISSION

We invest in the people and places of our region and steward community assets for lasting impact.

OUR VISION

A region of healthy, resilient, thriving communities for all.

OUR CORE VALUES

Adaptability
Collaboration
Equity
Generosity
Integrity
Stewardship



COLLABORATING TO CREATE LASTING IMPACT

Achieving community vitality is a challenge, but through strong collaborations we are responding strategically to our region's most pressing issues, meeting critical needs as they emerge, and leveraging promising partnerships.



SUPPORTING COMMUNITY MOBILITY



The Boardman Lake Loop Trail was established through a multi-year cross-sector partnership between TART Trails, Garfield Township, the City of Traverse City, and Grand Traverse County. With the Trail set for completion during the summer of 2022, support for ongoing care and maintenance is an essential part of the overall project.

In the fall of 2021, Garfield Township established the Boardman Lake Loop Trail Maintenance Endowment with an \$800,000 gift. The Endowment will help support the Trail for many generations to come.

"With so many partners investing and collaborating on this project, we are glad the Boardman Lake Loop Trail Maintenance Endowment will ensure the future of the trail is more secure," said Chuck Korn, Supervisor, Garfield Township.



"With so many partners investing and collaborating on this project, we are glad the Boardman Lake Loop Trail Maintenance Endowment will ensure the future of the trail is more secure."

Chuck Korn, Supervisor, Garfield Township



PROTECTING REGIONAL WATER QUALITY



Through the Northwest Michigan Community Development Strategy, we convene a Coalition of more than 30 cross-sector partners working together to transform the region. Together, we are focused on 13 economic, societal, and environmental goals, measured on a Community Scorecard.

Our region is well on its way to reaching our shared Scorecard benchmark of improving regional water quality. Through close collaboration between Coalition Contributors—the City of Traverse City and The Watershed Center Grand Traverse Bay—two large-scale green infrastructure projects have been installed.

These projects are actively keeping millions of gallons of runoff, hundreds of pounds of nitrogen and phosphorous, and several tons of sediment out of the Great Lakes and our drinking water supply each year.



SUPPORTING ACCESS TO EDUCATION



The Wilfred and Joan Larson Endowment was made possible through the largest cumulative gift in our 30-year history—\$15 million—from the late Wilfred and Joan Larson. In partnership with an endowment advisor, we are honoring the Larson's philanthropic interests to support emerging needs and opportunities.

One particular focus area is increasing access to post-secondary education. Through grants to local schools that have historically lower college access and attendance, we are helping students pursue educational opportunities beyond high school.

Since 2015, almost \$800,000 has been awarded from the Larson Endowment to support these school scholarships and other initiatives in the region. Through the power of endowment and the Larson's generosity, this community benefit will continue to grow in the years to come.



UPLIFTING DIVERSITY, EQUITY, AND INCLUSION

To cultivate a healthy, resilient, thriving region for all, we must support people across Antrim, Benzie, Grand Traverse, Kalkaska, and Leelanau Counties in attaining equitable access to the resources they need to flourish.

In 2021, we uplifted diversity, equity, and inclusion (DEI) as a priority, pursuing a variety of actions, including:

- **Publishing a DEI statement** to publicly share our commitment to this important work.
- **Launching our DEI Fund**, which is dedicated to supporting DEI efforts across the region, including organizations led by BIPOC, LGBTQ+, immigrant, neurodiverse, and/or disability community members.
- **Integrating gender-inclusive language** into our scholarship and grant applications.
- **Implementing an inclusive holiday policy** to better serve current and future staff, laying the groundwork for a more diverse team.
- **Signing onto the Disability Inclusion Pledge**, thus committing to pursue actions that will make our organization more inclusive of community members with disabilities.

Suttons Bay Public Schools

OUR DEI FUND ADVISORY COMMITTEE

Meagan Alvarado
Terra Bogart
JoAnne Cook
Bea Cruz
Tyasha Harrison
Amy Jun
Jane Kittendorf
Damian Lockhart
Brett Sinclair

*Thank you to
Joe Short for
serving in 2021.*

ADVANCING COMMUNITY-LED DEI EFFORTS

During our DEI Fund's first grantmaking cycle, we partnered with eight organizations, including Suttons Bay Public Schools (SBPS). Through a \$1,200 grant, we supported the SBPS' student-led Cultural Club, which hosts events and fundraisers aimed at promoting diverse cultural experiences.

"We are so thankful to see that the Community Foundation and the DEI Fund have become available to our local community in order for us to feel like we can find the resources and support we need to sustain these amazing efforts towards a better and more accepting world," said Jessica Vitale, Media Publications Supervisor and Spanish Instructor, Suttons Bay High School.

SBPS' recent DEI efforts also include inviting youth to The Friendship Community Center's Diversity Dialogues and Community Dinners and launching the HumanKIND Club in partnership with LIFT Teen Center, which we supported through our Youth Endowment in 2021. The HumanKIND Club provides a safe environment for Leelanau-area LGBTQ+ youth and their allies.

Together, SBPS' Cultural Club and HumanKIND Club are helping to create more inclusive, welcoming spaces for local students.



"We are so thankful to see that the
Community Foundation and the DEI Fund
have become available to our local community."

Jessica Vitale, Media Publications Supervisor
and Spanish Instructor, Suttons Bay High School

SUPPORTING YOUTH PROGRAMS & SERVICES

During 2021, our [Youth Advisory Councils](#), representing each of the five counties we serve, collectively awarded \$80,000 from our [Youth Endowment](#) to support youth programs and services across our region.

Through these Youth Endowment grants, we were proud to partner with 16 different organizations, including:

Justice for Our Neighbors to expand free immigration legal services for children and youth in Grand Traverse and Leelanau Counties.

Kids on the Go Traverse City to grow their summer camp program providing therapy and artistic, athletic, and social enrichment to children, including youth with disabilities.

Title Track to help fund their Water Protectors Training Camp, a five-week online course for teens that is grounded in Indigenous wisdom and is aimed at building their relationship with water and raising their awareness about challenges facing the Great Lakes.

Traverse Bay Children's Advocacy Center to support SafeTeam Training for student athletes, coaches, and parents to learn about how to recognize the signs of child abuse, talk about abuse, and report suspected abuse.



Kids on the Go Traverse City



"Having youth plan an active part in the process of grantmaking . . . cultivates a deeper sense of compassion for others."

Amy Jun,
Board Director

ADVANCING YOUTH ISSUES: A SPOTLIGHT ON LEADER, AMY JUN

Amy Jun, a senior at Traverse City West Senior High School, serves as one of our Board Directors, sits on our Diversity Equity Inclusion Fund Advisory Committee, and is a member of our Youth Advisory Council (YAC) leadership team.

As a YAC leadership team member, Amy provides strategic input to ensure a quality, meaningful YAC program experience for all students. She has enjoyed collaborating with other YAC

members to decide how Youth Endowment funds will support grant partnerships with youth-focused organizations such as Michael's Place, Traverse Bay Children's Advocacy Center, and Dolly Parton's Imagination Library.

"Having youth play an active part in grantmaking is so important. It teaches us to prioritize community needs and cultivates a deeper sense of compassion for others," said Amy.





TOGETHER, WE ARE SHAPING
OUR REGION'S FUTURE,
NOW AND FOREVER.

Our donor partners give meaningfully and generously in so many ways. Your support makes our work possible and shows that gifts of all sizes really do make a difference. *Thank you.*



“After moving to Traverse City, it was important to me that I seek out an organization that supports this amazing community. After seeing all of the programs, people, and parks that benefited from the GTRCF, I knew that I could trust the organization to make a lasting impact with my funds. Furthermore, I decided to donate via payroll deduction. It is easy, consistent, and budget-friendly and also allows me to take advantage of my employer’s donor match.”

Erika Fussman, Payroll Giving Donor Partner, Community Funds

“The reason that recurring giving makes so much sense to us is because the work that the Community Foundation does is recurring. It’s not a one-time effort; it’s an ongoing commitment to supporting our region. We are happy to support that.”

Pete & Whitney Finch,
Monthly Giving Donor Partners,
Community Funds



“The Community Foundation is such a great local resource. With its community development focus, it is providing opportunities for individuals and organizations to connect, share, and improve our community to the benefit of all.”

Kate & Rick Dahlstrom, Donor Partners,
Mental Health and Well-Being Support Fund

“I am a particularly ardent believer in community foundations as they are professionally managed and legally obligated to protect the corpus of an endowment. I give to the Grand Traverse Regional Community Foundation because it’s a vehicle for supporting what I believe in.”

John Vinkemulder, Donor Partner, Frankfort Garden Theater Endowment
and John P. and Lynn Vinkemulder Endowment

“Seldom in my life have I felt so privileged as when I am allowed to serve as a conduit between my community of the present and our children’s and grandchildren’s communities of the future. It brings a feeling of timeless giving that is difficult to duplicate.”

Randy Lucyk, Donor Partner,
Endowment for Kalkaska Area



RESPONDING TO AREAS OF GREATEST NEED AND OPPORTUNITY

We understand the greatest challenges and opportunities facing our communities now and over the next several years. One strategic way we can support our region in a flexible, responsive fashion is through Community Funds. **Community Funds are resources we steward that are not restricted to a particular cause or organization.** Grants from these types of funds are directed by our Board and are intended to fill gaps or leverage promising opportunities that our other 340 funds may not be able to meet.

Our Urgent Needs Fund is a perfect example of the power of Community Funds. With the support of many donor partners, we raised nearly \$1 million, all of which was awarded in grants benefiting 75 nonprofit partners across the region. These dollars provided support to organizations working with individuals and families who were disproportionately impacted by the COVID-19 pandemic.

The Urgent Needs Fund sunset in 2021, **yet there are plenty of needs and opportunities in our communities that remain unaddressed.** While we have a long path ahead to build needed Community Fund resources (currently just 3% of our total assets are in these types of funds), **here's how we are currently putting flexible assets into action to support our region.**



ADDRESSING HOUSING NEEDS

Gateway communities that border Sleeping Bear National Lakeshore, like Glen Arbor, Empire, and Frankfort, are facing a significant shortage of seasonal workforce housing options. To help tackle this issue, we brought several funding partners together and leveraged \$10,000 in Community Funds that enabled the Sleeping Bear Gateways Council to access \$90,000 in federal funding. This support will allow the Council and its partners to develop solutions for housing needs in these local communities.



PRESERVING A VALUED COMMUNITY ASSET

During the summer of 2021, unprecedented heavy storms brought down trees and cut electricity for many across our community. Flooding damaged homes and buildings, including the Kalkaska County Library. The Library's lower level bore the brunt of the water damage, and immediate support was needed to lessen its impact and reduce the chance for future water issues. Using Community Funds, we provided \$10,000, which helped the Library continue serving the Kalkaska community.



CONNECTING EARLY CHILDHOOD SERVICES

In 2021, the United Way of Northwest Michigan launched the Early Childhood Innovation and Development Hub to help reduce barriers for local caregivers, providers, parents, and children. To support the Hub's launch, we brought nearly \$14,000 to the table from our Community Funds and a donor advised fund we steward. This funding will help create better access to resources for families during the important early years of a child's life.

TOGETHER, WE CAN KEEP IMPACTING ISSUES THAT ARE CRITICAL TO OUR REGION'S FUTURE VITALITY. INVESTING IN COMMUNITY FUNDS IS OUR SHARED OPPORTUNITY TO SUPPORT HEALTHY, RESILIENT, AND THRIVING COMMUNITIES ACROSS ANTRIM, BENZIE, GRAND TRAVERSE, KALKASKA, AND LEELANAU COUNTIES, NOW AND FOR GENERATIONS TO COME.

LEAVING A LEGACY: OUR COMMUNITY GUARDIANS

Our Legacy Society honors community-minded donor partners that have created a plan for a future gift, such as through a will, trust, or beneficiary designation. They have committed to making a long-term investment in our region, entrusting us with their giving so that future generations benefit from their generosity.

Anonymous (4)	Thomas F. Menzel
Ed and Mary Arbut	Larry and Joan Miller
Leila and Owen Bahle *	Helen and Gov. William Milliken *
Teresa Beamsley	Richard and Virginia Mouch
Phillip Begley *	Ruth Luse Myers *
John and Rebecca Bercini	Richard W. and Clarine Olson *
Gordon V. Brown *	Dr. Daniel Palmer
Elisabeth W. Case *	Joey and Bill Parris
Steve and Hallie Christian	Gladys Pascoe *
Chuck Cigrand and Sallie Thompson	Nannette and Morton Peterson *
Elaine Cluff *	Cleo M. Purdy *
Jean and Gordon Cornwell *	Daniel Remahl
John Davies	Connie Riopelle *
Robert A. and Arlene V. Dean	Gordon H. Robertson *
Shirley Denman *	Marvin and Luella Rorick *
Helen Wolfe Dewey	George T. and Barbara W. Schilling *
Clifford Domke *	Bill and Mary Smith
Phil Ellis	Mark and Sue Smith
William C. Engle *	Thomas D. Streeter *
Richard A. Grout	Kenneth Taylor, D.O. *
James C. Gurd *	Cecil and Kris Thomas
Marie Drucka Guyton *	Ann Torrey *
Chip and Laura Hansen	Kathy Tuckerman
Robert and Natalie Hansen *	Lars C. Wigert
Martha and John Hicks	Helena G. Wilkening *
Carolyn Hoagland *	Richard and Kimiko Williams
Kenneth F. and Elizabeth A. James *	Joan and Willard Wolfe *
Bennie M. Kline *	Dick and Kathy Woods
Edith A. Krause *	Cathie Ann-Frederick Worden
Will and Joan Larson *	Lucille and Harlan Yeager *
Rebecca MacKay *	Robert and Pauline Young
Emer A. Mathias *	Kris A. Sheffer-Zimmerman and J. Eric Zimmerman, M.D.
Nancy and Phil Meek	

* Indicates donors whose gift has been realized.



GIVING FOR COMMUNITY BENEFIT, NOW AND LATER

John Davies—an avid 95-year-old hiker and skier—has called Elk Rapids home for the last 33 years. He began considering how he could support the region because, as he stated, “it’s been so good to me.” John approached a friend about this desire, who then referred him to the Community Foundation. In 2021, John became one of our supporters, providing a generous gift to our Focus Fund Endowment, one of our flexible Community Funds.

“The Community Foundation’s ability to move in different directions as needs come up is what appealed to me,” said John.

In addition to his current giving, John has committed a future gift that would allow him to support what the community may need down the line even after he passes. We worked closely with John to match his passion with purpose, and John joined our legacy society of Community Guardians, including a gift to the Community Foundation as part of his will.



“Needs will change over the years. The Community Foundation has a broad interest in the community that will allow it to support the community however it needs to be supported.”

John Davies, Donor Partner and Community Guardian



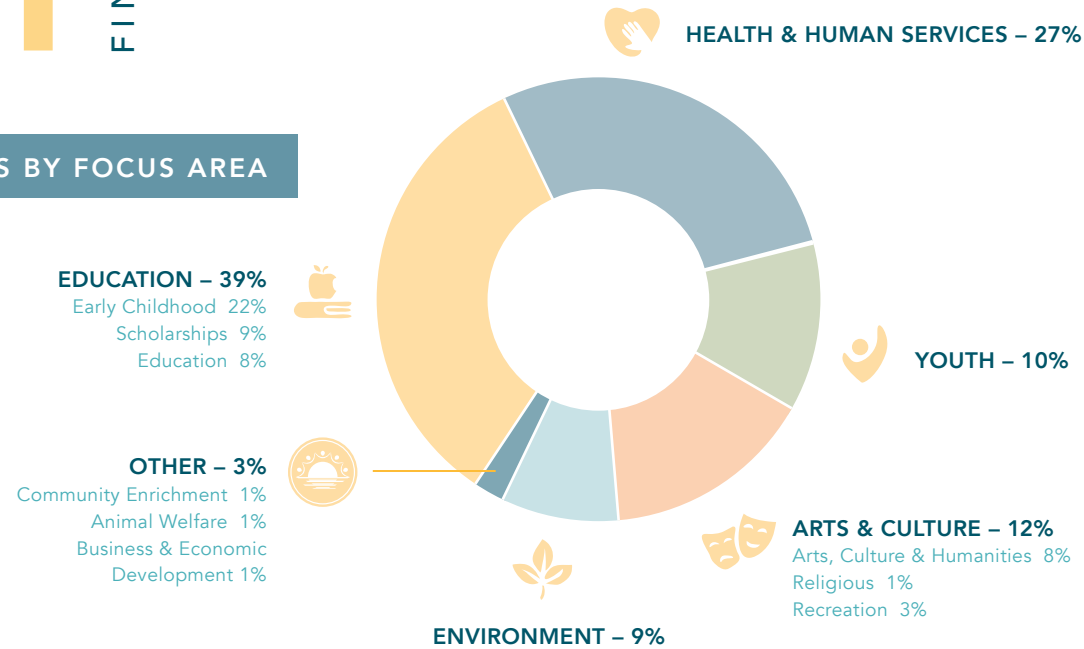
GIVING NOW,
GIVES FOREVER

Your support is critical to putting our shared dreams for our region into action. By [giving to the Community Foundation](#) today, your gift can support vibrant, thriving, and sustainable communities across Antrim, Benzie, Grand Traverse, Kalkaska, and Leelanau Counties forever.

TOGETHER, WE CAN MAKE A DIFFERENCE.

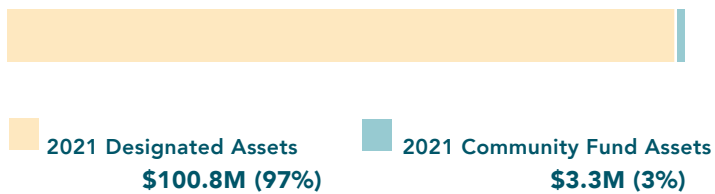
2021 FINANCIALS

GRANTS BY FOCUS AREA



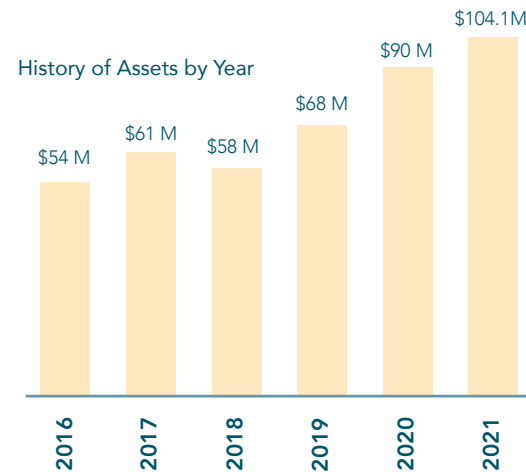
ASSETS

2021 Assets = \$104.1 M



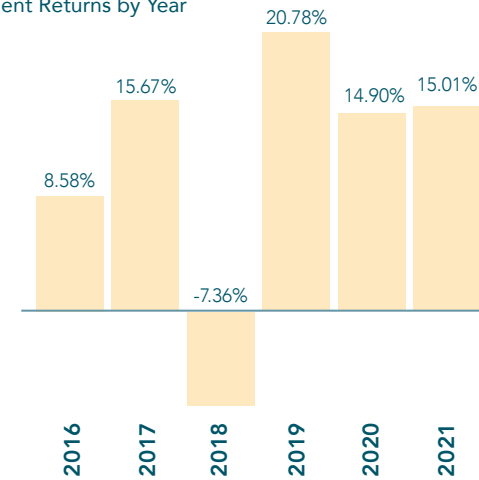
Designated assets have a specific area of focus or benefit, such as scholarships or grants for designated organizations.

Community Fund assets are responsive and flexible resources to meet areas of greatest need.

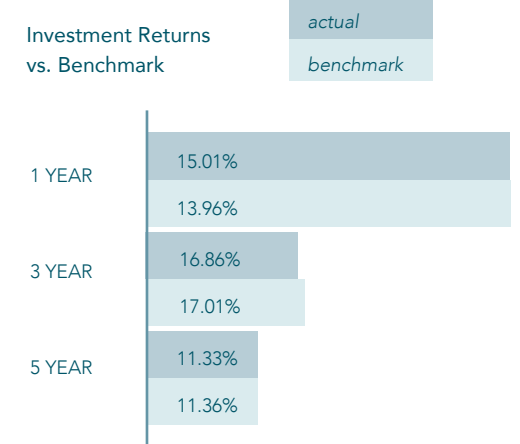


INVESTMENTS

Investment Returns by Year



Investment Returns vs. Benchmark



The benchmark consists of investments that mirror our portfolio, allowing us to assess the relative performance of our own investment portfolio.

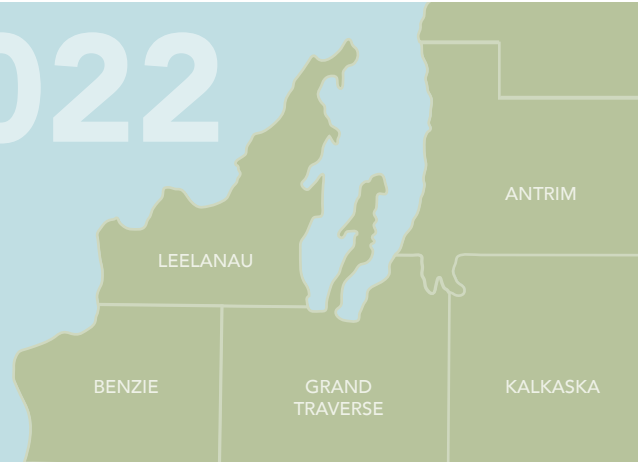
STATEMENT OF ACTIVITIES

	2021	2020
Net Assets	\$90,131,398	\$67,967,501
<i>beginning of year</i>		
Endowment Gifts	\$ 4,563,737	\$ 13,558,432
Non-Endowment Gifts	\$ 1,191,093	\$ 2,124,492
Total Gifts	\$ 5,754,830	\$ 15,682,924
Investment & Other Income	\$ 3,596,383	\$ 2,175,174
Unrealized Market Gain or (Loss)	\$ 9,251,752	\$ 9,367,426
Total Revenue	\$18,602,965	\$27,225,524
Endowment Grants	\$ 2,329,854	\$ 2,064,280
Non-Endowment Grants	\$ 1,054,673	\$ 1,741,507
Total Grants	\$ 3,384,527	\$ 3,805,787
Operating Expenses	\$ 1,174,451	\$ 1,081,096
Other Expenses	\$ 100,919	\$ 174,744
Total Grants & Expenses	\$ 4,659,897	\$ 5,061,627
Net Assets	\$104,074,466	\$90,131,398
<i>end of the year</i>		

2021/2022

BOARD OFFICERS

Terry Beamsley, Chair, Leelanau County
 Jerry Ring, Vice-Chair, Grand Traverse County
 Larry Nelson, Secretary, Leelanau County
 Beth Dunckel, Treasurer, Grand Traverse County



BOARD OF DIRECTORS

ANTRIM COUNTY
 Laura Asiala
 Matt Davis
 Mark Irwin
 Dan Phillips
 Royce Ragland

GRAND TRAVERSE COUNTY
 Suzanne Miller Allen
 Marty Colburn
 Annie DeVries
 Beth Dunckel
 Amy Jun*
 Damian Lockhart
 Dennis Pearsall
 Jerry Ring
 Bill Smith

LEELANAU COUNTY
 Terry Beamsley
 Sara Brubaker
 Marshall Collins
 JoAnne Cook
 Ranve Martinson
 Larry Nelson

BENZIE COUNTY
 Megan Royle Carrella
 Elise Crafts
 Laris Galejs
 Linda Kehr
 Chris MacInnes
 Carol Marsh
 Amy Schindler

KALKASKA COUNTY
 Rachael Birgy
 Cash Cook
 Andi Halpin
 Cari Jo Roberts
 Troy Stobert

Additionally, thank you to the following community members for their years of service on the Board:
 Pete Finch
 Rich Hannan
 Rex O'Connor
 Roger Perry
 Kim Ranger
 Joe Short
 Janet Sieting

Board List as of January 2022
 *Youth Representative

THE COMMUNITY FOUNDATION TEAM



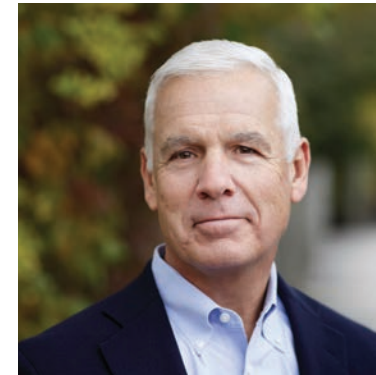
Pam Amundsen
 Donor Services Manager



Joan Hughes
 Administrative Donor Support Services



Paul Kester
 Vice President, Finance and Administration



David Mengebier
 President and CEO



Alison Metiva
 Vice President, Donor Engagement and Operations



Brittany Morton-Smith
 Operations and Grants Coordinator



Kristina Pepelko
 Communications Manager



Gina Thornbury
 Program and Grants Manager



Steve Wade
 Vice President, Community Impact



THANK YOU FOR GIVING

3 Sisters Foundation
 Ward Abbey
 Jim Airhart
 All Seasons Resort
 Jason Allen and Suzanne Miller Allen
 Maurie and Betsy Allen
 American Association of University Women
 Pam and Roger Amundsen
 Carl and Betsy Anderson
 Peter Anderson
 Rosalie Andrews
 Andringa Family Fund
 Philip and May-Lis Andrus
 Gabriella Angerbrandt
 Mary Anglin
 Anonymous
 Friends and Family of the Anuntis
 Gary and Mimi Appel Family Fund
 Bob and Molly Appleford
 Ed and Mary Arbut
 Jon and Mary Armstrong
 Mary Ann Arvo
 Jeanne Ascione
 Marina Ascione
 Laura Asiala
 AUltra Ventures
 Sharon Bacon
 Karl and Chava Bahle
 Lois Bahle and Larry Mawby
 Foy Baillie
 Thomas Baird
 Dakota Baker
 Rose Baker
 Elizabeth Balazs-Foxall
 Nancy Barbas Philanthropic Fund
 Janet Barber
 Gary and Christi Bardenhagen
 Jim and Jan Bardenhagen
 Mike and Carroll Barr
 Cindy Barton
 Robert Bartosz
 Roger and Jan Bauer

Terry Beamsley
 Alicia Becker
 Dennis and Carole Becker
 Ernest Behnke
 Jeffrey and Kathleen Bell
 Lawrence David Bell
 Dr. Rodney and Mary Bellows
 Benzie Area Symphony Orchestra
 Benzie Sunrise Rotary Foundation
 Cory Beuerle
 The Les and Anne Biederman
 Foundation
 Alfie Bingham
 Butch and Jackie Bingham
 Dr. Richard and Susan Bingham
 Rachael Birgy
 Tom and Gwen Bischoff
 Gus and Shirley Bishop
 Sarah Blessing
 Brian Blood
 Dan Bloomquist
 Blue Cross Blue Shield of Michigan
 Gil and Anne Bogley
 Nancy Bolt
 Cheryl Booth
 Susan Bosler
 Dan and Sue Boss
 ML Bouckaert
 Bowerman Family Fund
 Mark J. Bowyer
 Connie Boyd
 James and Dorene Boyd
 Robert Boylen
 Linda Bradley
 Jerry and Carolyn Braiedy
 Evelyn Brandt
 Chris and April Branson
 Craig Brass
 Eric and Julia Braverman
 Kalin Brehler
 Tim Brick
 Chuck and Nancy Brickman

Raymond and Janet Brock
 Blake and Marci Brooks
 Mary and Bob Brown
 Michael Brown
 Robert Brown
 Eleanor Brownell
 Sara Brubaker
 Kathleen Bruce
 Gordon Brunner
 John Brunner
 Connie Bruski
 Gale Bryant
 Bonnie-Jean Buckett
 David Buffum
 Jodie Buntain-Ricklefs
 Cassie Burda
 Burdco Incorporated
 Debbie Burditt
 Keith and Joanne Burnham
 Ed and Leslie Butt
 Charles and Susan Buxton
 Bruce and Mary Byl
 Craig and Laura Cameron
 Blaine and Camille Campbell
 Braun Campbell
 Bruce and Linda Campbell
 Tom and Dianne Campbell Charitable
 Fund at The Chicago Community
 Foundation
 Field and Sandra Carden
 Matt Cardwell
 Mark and Laurie Carlson
 Robyn Carlson
 Vicki Carpenter and Philip Downs
 Beckie and Pat Carroll
 Beth Carter
 Bill and Sandy Cartwright
 Elisabeth Case Estate
 Eric B. and Gwen Catt
 CBRE
 Rhoda Centazzo
 Robert and Susan Chapman



“My donations are based on the considerable valuable work the Foundation does in our region, coupled with the fact that they are gifts that give forever. I appreciate the variety of community needs that are greatly assisted by the Foundation’s philanthropy. The Community Foundation is an asset that helps with the quality of life throughout the region, with care and compassion.”

Cash Cook, Board Director, Kalkaska County

Charlevoix County Community
 Foundation
 Charter Township of Garfield
 Mary Ann Cheney and David Mix
 Mary Cheryl and John Hargrove
 Nick Christopher
 Chuck Cigrand and Sallie Thompson
 Frank and Sandra Ciloski
 David and Cynthia Clark
 Lauren Clark
 William Clark
 Dale Claudepierre and Melynda Bagley
 Bud Cline and Della Lewis
 Tim and Mary Clulo
 Rick Coates
 Richard and Marilyn Cobb
 George and Barbara Cochran
 Susan and Al Cogswell
 Marty and Betsy Colburn
 Jeryl Colby
 Richard Colker
 Pam Collie
 Rob and Diane Collier
 Ed and Bobbie Collins
 Bob Condon
 Conrail
 Consumers Energy Company
 Cash Cook
 JoAnne Cook
 Melvin Cooke

Jack Cooper
 Dean Coppens
 Corbin Design, Inc.
 Ted Cornell
 Marilyn Coville
 Abby Crawley
 Keven and Patricia Cross
 Charles and Celeste Crouch
 Crown Associates Inc.
 Crown Golf Club
 Ron and Paula Cruickshank
 Crystal Downs Country Club
 Women’s Auxiliary
 Marcia Curran
 Rick and Kate Dahlstrom
 Stacy and Carol Daniels
 Thomas David and Fannie Metcalf
 Davidson Family
 John Davies
 Mary Davis
 Matt and Sarah Davis
 Chris Degood and Katherine
 Marciniak-DeGood
 Ryan Deisler
 Steve Dertz
 Michael and Teckla Dettmer
 John DeVine
 Annie and Mike DeVries
 Patrick Dewey
 Michael Dively

Larry Domine and Rita Wessels
 William and Phyllis Donberg
 Charitable Fund
 Kristal Dorman
 Mark and Cheryl Dost
 Chris Dow
 Don and Kathryn Drabik
 Don and Sue Drenth
 Douglas Drenth
 Dr. Kenneth and Suzanne Drenth
 Beth and John Dunckel
 Tom Dutmers
 Jim and Sue Dutmers
 Jim and Sarah Dutton
 Barbara Duvall
 Darcy Dye
 Eagle-Eye Drone Service
 Sheryl Ebert
 John and Anne Edgecomb
 Edgewater Resources, LLC
 Chris and Sally Edwards
 John and Patricia Egloff
 Elizabeth Oliver Center for the Arts
 Elk Rapids Garden Club
 Elk-Skegemog Lakes Association
 Elks Lodge of Traverse City No. 323
 Sally Ellinger
 Phil Ellis
 William and Nancy Ellis
 Fred and Nancy Elmore

Mark and Judy Embree
 Michael Emery
 Endura Performance Homes
 Len and Mary Erickson
 Albert Evans
 Erik Evans
 Lisa Evans
 Alison and Kevin Ewing
 Dr. Richard and Barbara J. Faller
 Hugh and Betty Farber
 Gary and Beth Fazzino
 Gregg and Nancy Fazzoni
 Kerry Feiten
 Dave and Louise Fenner
 Bob Fenner
 Amy and Carl Ferguson
 Joseph Ferry

Friends of the Betsie Valley Trail
 Fred and Kem Frost
 Carlton and Rondi Fry
 Marcia and David Fuhrhop
 Erika Fussman
 Paul and Nancy Gaffney
 Brent Gahn and Mary Kavanaugh-Gahn
 Peter and Patricia Gaines
 Laris Galejs and Diana Curran-Galejs
 Martha Garber
 Gardner Foundation
 John Gehring
 Gene's Auto Sales Inc.
 Barbara Gentile
 Ed Gergosian
 Russell and Jane Gesme
 Charitable Fund

E. Phillip and Jane Goethals
 James and Carol Goetz
 Goodall Family Charitable Foundation
 Steve Goodall and Jane Gwinn Goodall
 Dan and Magee Gordon
 Grand Traverse Band E.D.C.
 Grand Traverse Bay YMCA
 Grand Traverse County
 Grand Traverse Regional
 Land Conservancy
 Trey Greene
 Ann Greenwell
 Don and Ann Gregory
 Dan and Tina Griffin
 Pat Griffin
 Karen Griggs
 Audrey Grillo

Haggard's Inc.
 Ed and Joyce Hagmaier
 John and Carrie Haley
 Chad Hall and Joshua Anderson
 Dr. Steve and Margaret Hall
 Andi Halpin
 Rich and Anna Hannan
 Chip and Laura Hansen
 John and Catherine Hansen
 Natalie J. Hansen Trust
 Keith Harbison
 Neil and Kimberli Harris
 David and Susan Haughn
 Steve Hauser
 Hawkstalk, LLC
 Jon and Peggy Hawley
 Ross, Veronica, Sydney and
 Elliot Hazelton
 John Heiam and Lois Goldstein
 Kathy Heidt
 Kathy Heil
 William and Ann Henning
 Wally Herrick
 Herrington-Fitch Family Foundation
 Ed Hertenstein
 Brad Heywood
 Cynthia Higgins
 The Hildreth Family Fund
 Mel and Penny Hill
 Dick and Carol Hilton
 John Hoerr
 Virginia Hoffa
 Bob and Jane Holdeman
 William and Eleanor Holdsworth
 Tom and Barb Holka
 Bill and Myrna Holland
 Mark and Yvonne Holtz
 Nancy Honchell
 Janet Hough
 James Houghton
 Housing North
 Jeff and Sandy Howe
 Vicki J. Howley
 HP Foundation
 Jim & Diana Huckle Family Foundation
 Raquel Huddleston
 Sue Hudnut and Jon Hague
 Mike and Lesa Huget

Frank and Joan Hughes
 Robert Hughes
 The Hummel Family
 Carol Inman and Family
 Interlochen Woman's Club
 IPEX, Inc
 Ginny Istnick
 Mike and Joanie Jackson
 Paul and Laura Jacobson
 Michael and Jean Johns
 Arah and Andrew Johnson
 Dick Johnson
 Jeff Johnson
 Keith and Claudette Johnson
 Rob and Mica Jones
 Sandy Joslin
 Dr. David and Marcia L. Kalayjian
 Kalkaska County Library Employees
 Kalkaska Memorial Health Center
 Chris Kantgias
 Lawrence Kantor
 Craig and Jane Karraker
 Bill and Laura Kasbeer
 Dean Kasperzak
 Jane Kaule
 Jenny Keller
 Anne Kelly
 Jim and Linda Kemper
 Michael and Marguerite Kenney
 Paul and Shelley Kester
 Troy Kierczynski
 Colin Kihnke
 John King
 Pat King
 Steve King
 Richard Kirsch
 John Klang
 Kyle Klein
 Margaret Klesney
 Thomas Klingler
 KMG Charitable Foundation, Inc.
 Louise Knauer
 Lester Knight
 Beverly Ann Kocevar
 Micheal and Laura Konesko
 Dr. and Mrs. Andrew Koran
 Kerry and Carolyn Kotila
 Walter Kraimer

John and Judy Krug
 Karen Kuehlhorn
 Jim and Kris Kunz
 Jennifer and Kieron Lake
 Phillip Lambert
 James and Suzanne Lamond
 W.J. Larson Charitable
 Remainder Unitrust
 Lawrence Livermore National Laboratory
 Roy Lawrence
 Leathers by David II LLC
 Clark and Sarah Lefurgy
 Tom and Kathy Lehner
 Bob and Eva Lenzini
 Nancy Letherby
 Jan Leuallen
 Barry Levine
 George Lindner and Patricia
 Reid Lindner
 Damian and Jill Lockhart
 Long Lake Grocery
 Carolyn Longmire
 Ellen Longmire and John Glatzmaier
 Bill, Alex and Sarah Lorne
 Randall and Catherine Lucyk
 Walt and Mary Ludwick
 Stephanie and Greg Luyt
 Elizabeth MacGirr
 David and Lorah MacIntosh
 The Madrick Family
 David Mahan
 Tim Main
 Mallard Cove Assisted Living
 Marc and Jeanne Malnati
 Fred and Barbara Malpass
 Mapleridge Construction LLC
 Benjamin Marentette and Matt Turner
 Joseph and Norma Mariage
 Tracy and Sandra Mariage
 Marsh Automotive Group, Inc.
 Carol and George Marsh
 Karl and Barbara Marsh
 Martell Custom Stone LLC
 Dr. David and Cathie Martin
 Wendy Martin
 Ranve Martinson
 Greg Maurer
 Vickie Maurer



"I support the Community Foundation and choose to donate because I believe in the work of the Foundation and the commitment to enhance and better the lives of everyone in our five-county region."

JoAnne Cook, Board Director, Leelanau County

Ferson Creek Fund
 Wade and Beverly Fetzner
 Pete and Whitney Finch
 Dr. Brian and Vera Fisher
 Jeff and Nancy Fisher
 Paul and Charlene Fitzpatrick
 Dave and Carol Fleisher
 Rick and Barb Floria
 Bob and Beverly Forslund
 Bud and Nancy Foster
 Carie Fowler-Gehring
 Lisa Franseen, PhD
 Julia Freiburger and Vic Milla

Nancy Gidcumb
 Elizabeth Gill
 Gillett Family Charitable Fund
 Dr. William and Jayne Gilligan
 Mary Gillooly
 Dean Ginther
 Renne and Lynette Girard
 Virginia Girard
 Francie Gits
 Nick, Nina, Alden and Liam Glauch
 Glen Arbor Arts Center
 Drs. Andrea Goethals and
 Harrison Tong

Dennis and Carol Gripenrog
 Groundwork Center for
 Resilient Communities
 Dick Grout
 James C. Gurd Trust
 Joe Guzowski
 Don and Katie Gwinn
 Virginia Gwinn
 Charles Gwizdala
 Patricia Haber
 Donald and Mary Ann Hacker
 John and Penny Haddick
 Tammy Hagerty

Rick and Betty McCaghy
 Don and Terry McCall
 Mary and Joey McCanna
 Kevin and Peg McCarty
 Chris McClear
 Dick and Honnie McClear
 John and Lisa McClure
 The McCrieries
 Tom and Shelle McElwee
 Brian and Cornelia McGrath
 Mark and Patricia McGrath
 Carol McKee
 McLean's Hardware Home Center
 Ed and Sherry McNamara
 Bob McNutt
 Kathy Mead
 Phillip and Nancy Meek
 Joel and Carol Meister
 David and Kelli Mengebier
 Teresa and Glenn Mensching
 Roger and Janice Merriman
 Alison and John Metiva
 Cathy Meyer-Looze and Kelly Looze
 Michigan Association of United Ways
 Michigan Legacy Art Park
 Mid-American Title
 Arlin and Arlene Milbrodt
 Ken and Lynette Milbrodt
 Eldon Miller
 Eleanor Miller
 Joan E. Miller
 Ray and Mary Ellen Miller
 James Millikan
 Bonnie Mills
 Sam Mitchell
 John Modlin
 Jim Modrall
 Burton and Sharon Moeke
 Annabel Moore
 Michael Moran and Marsha Hanna
 Tom and Sharon Morgan
 Rick and Suzanne Morris
 Courtney Morris
 Kim and Wheezy Morris
 Paul L. and Nancy L. Morris Gift Fund
 Richard and Elizabeth Morris
 Susan Morris
 Virg Mouch

Tom Mountz
 Chuck and Linda Mueller
 Fred Muller
 John L. Mulvaney Foundation
 Maree Mulvoy
 David Muna
 Munson Healthcare/Munson
 Medical Center
 Christine Murdoch
 Elizabeth Murphy
 Jim and Bruce Murray
 Wendy Nagle
 Paul Nagurka and Rose Ann Jacobs
 National Business Network
 Traverse City
 National Writers Series
 Cindy Neddo
 John and Susan Nehra
 Mark and Helen Neithercut
 Jodi Nelson
 Sharon Nelson
 Wally and Peggy Nelson
 Mark Nesbitt and Sara McVay
 Ann and Norm Neuenschwander
 Tom and Mary Nixon Charitable Fund
 Tim Nolan
 Rebecca Norris
 Northern Test and Balance LLC
 Northshore Tools LLC
 Northwoods Tattoo Parlour LLC
 James Nothoff
 Gerleen O'Brien
 Pat and Marlene O'Connor
 Sandra and John O'Neal
 Bill and Nancy O'Neill
 Bob and Sue Olenzak
 Oleson Foundation
 Bill and Joanne Olsen
 David and Emily Olson
 Eric and Joyce Olson
 John and Carolyn Olson
 Richard Olson Trust
 Anne-Marie Oomen and David Early
 Cynthia and Garrick Opie
 The Oprandy Siblinghood
 Mark and Holly Owen
 Dona Paavola
 Jeffrey Padnos

Bob and Mary Page
 Bill and Joey Parris
 Molly Paryani
 Stan and Ann Pasch
 Mike and Stacy Pasche
 Michael and Linda Pattison
 Edith Paulis
 Peter and Sarah Payette
 Dennis and Joann Pearsall
 Karl Pearson
 Pegtown Station
 Kristina Pepelko and David Leal
 Anibal and Ann Pepper
 Perry Family Fund
 Heather and Roger Perry
 Dr. Elmer and Ruth Peterman
 Mark and Katy Peterson
 Ed and Patty Petrick
 Tom and Martha Phillips
 Denis and Martha Pierce
 Pat Pierce
 Pioneer State Mutual Insurance
 Company
 Susan Plater
 Michael and Nancy Plessner
 Joseph Poole
 The Porath Family
 Tom and Ann Post
 Gary Potter
 George and Nancy Powell
 Verne Powell
 David and Donna Prevo
 Jerry Prichard
 Beth and Scott Pryde
 Jane Purkis
 Douglas and Mary Putnam
 Angela Quinn and Steven Nagy
 John and Linda Racine
 Jim and Pam Radabaugh
 Royce Ragland and Ken Bloem
 Bruce Ranck
 Eileen Rauschert
 Mark and Cynthia Rauschert
 Rosanne Raymond
 Holly and Tom Reay
 Recovery Road Riders
 Brent and Page Rector
 Ruth Reeve

David Reid and Katherine Houston
 Nancy Reid
 The Nancy C. Reid Charitable
 Gift Fund
 Judy Reinhardt and Jim Schwantes
 Deanna Relyea
 Dan Remahl
 Peachy and John Rentenbach
 Elsie Borwell Revenaugh
 Mark and Jacqueline Ribel
 Chip and Shannon Rice
 Dan Rice and Marek Ulicny
 Neil Rice
 Rice's Rustic Resort Association

Ron and Patti Robinson
 Ted and Maureen Robinson
 Charlie and Clare Rodes
 Nelson and Martha Rodes
 Scott Rodes
 Terry and Roberta Rogers
 Dave and Liz Rollert
 Brad Rollings
 Ron Romero and Kathy Gwinn Romero
 Luella M. Rorick Administration Trust
 Rotary Charities of Traverse City
 John and Barbara Rothhaar
 Rick and Cindy Sack
 Sanctuary Handcrafted Goods

Rosalind Sell
 Shannon Family Foundation
 Don and Bea Sherman
 Joe and Leah Short
 Siebenthaler Foundation
 Janet and Terry Sieting
 Gary and Carol Silverman
 Debbie Simpson
 Catherine Sivits
 Donald Stominski Jr.
 Dudley and Kim Smith
 Bill and Mary Smith
 Gregg and Dee Smith
 Jon Smith



"The Community Foundation provides our five-county region with resources that are impactful today and into the future. I am honored to work with such an amazing group of talented staff and Board Directors to achieve the goals of the community, donor partners, and the Foundation."

Beth Dunckel, Board Director, Grand Traverse County

Bill and Vicki Richmond
 Gary and Elisabeth Rickner
 Jerry Ring
 Connie Riopelle
 Anne and Mike Rivard
 Georgia Rivers
 Bob Robbins
 Carrie Robbins
 Judith Robbins
 John and Cari Jo Roberts
 Stacey Roberts
 Whitney Roberts and Sara Boys
 Kelly and Cherie Robinson
 Madeline Robinson

Lou and Nancy Sanford
 Bill and Mary Lou Sankbeil
 Ross and Kerry Satterwhite
 Helene and Robert Saunders
 Charitable Trust
 Martha Scarborough
 Bonnie and Michael Scheid
 Kathy Scherer
 Ed and Amy Schindler
 Bob and Arden Schlueter
 Kurt and Karen Schmidt
 Sue Schroer
 Wally and Pat Schroth
 Lavonia Seidel

Woody Smith and Susannah Tobin
 Wyatt Smith and Brittany
 Morton-Smith
 John and Suzanne Smucker
 Maureen and Paul Smyth
 Dr. Peter and Kristin Sneed
 Jeanne and John Snow
 Nathan and Robin Sommer
 Larry and Linda Sommerville
 John and Bonnie Sonnemann
 Robert and Patricia Soutas-Little
 Russ and Tina Soyring
 Amy Spade
 Bradford Sprouse



“Generosity can open doors and lead to a better future for our region. Giving to the Community Foundation is an excellent way to impact lives right now and for generations to come.”

Cari Jo Roberts, Board Director, Kalkaska County

Steve and Penny Staelin
 Stephen H. and Penny K. Staelin Fund
 Joe and Joan Stafford
 Mary Stamm
 Terry and Ann Stamm
 Charles Starks and Elizabeth Schmidt-Starks
 State Farm Companies Foundation
 Donald and Alison Steel
 Glen Stenson
 Thomas Stephenson
 Jim and Donna Stevens
 Troy and Carrilyn Stobert
 Craig and Jean Stoemer
 Tom Stokes
 Richard and Sandi Stowe
 Robert and Ruth Stow
 Victor and Jerri Strecher
 Marv and Carol Studinger
 Don Surber
 John Szniewajs
 Jeff Tank
 Don and Margaret Tarkington
 Dan and Ann Tavis
 TC Baseball LLC
 TC Energy
 tcf Bank
 T.E.A.C.H.
 Lester and Joanne Teague
 Nancy Temple

Margee Thomas and Family
 Thomas Builders, LLC
 Thompson Surgical Instruments, Inc.
 Gary and Sally Thompson
 George and Sally Thompson
 John and Amy Thornbury
 Gina and Ryan Thornbury
 Kate Thornhill
 Joe and Patti Tibaldi
 Denny and Kathy Tilley
 Martha Topol and David Kirby
 Adam and Gretchen Townshend
 Sally Tramitz
 Traverse City Administrators Assoc.
 Traverse City Area Public Schools
 Traverse City West Titan Athletic Boosters
 Traverse Connect
 Duane and Gay Travis
 Tom and Sue Trumbull
 Kathy Tuckerman
 Turn to The Wonderful Fund
 Martin and Pamela Ulicny
 Louise Uphold
 Jerry and Liz Urban
 Mary Ann Urban
 Chuck and Jen Valleau
 Bill and Mary Valpey
 Mark and Suzanne VanderKlipp
 Howard and Patricia Van Houten

Karen and Peter Van Nort
 Marti VanEenaam-Iwanicki
 Barb and Jim Varley
 Jo Vaughan
 Constance Vedder
 Norm Veliquette and Judy Brummeler
 Gary and Lisa Vidor
 John and Lynn Vinkemulder
 Karen Viskochil
 John Vogel and Kathy Amerman
 Jill and Tim Vollbrecht
 Suzy Voltz
 Steve and Linda Wade
 Dr. Michael and Debra Wagner
 Dick and Mary Walker
 Dr. David and Becky Walker
 Family of Kay Walker, Retired Teacher from West High School
 Kent and Suzanne Walker
 Steve Walton
 Sara Ward
 Pat and Ken Warner
 Anne Watson
 Cathy Webb
 Jill Webb
 Barbara Gilmore Weber
 Thomas Wells
 Ryan and Katie Werder
 Becky Wesley
 Westwoods PTO

Bob and Mary Weyand
 Marilyn Wheaton
 Gerald White
 Whitney Foundation
 Harry and Susan Wiberg
 Susan Widman
 Helena and Orlie Wilkening Fund - St. Louis Comm. Found.
 Ima Williams
 Kenneth and Kimberly Williams
 Richard and Kimiko Williams
 Tommy Williams
 Ronald Williamson
 Carey and Mike Wills
 Bart and Patty Wilson
 Catherine Ann Wilson
 Frank and Beverly Winders
 Eric and Barbara Winkelman
 Douglas Wisniewski and Lori Frank
 Bill and Rita Witler
 Dwight and Georgie Woessner Fund
 Peter Woessner
 Willard and Joan Wolfe Trust
 Randy and Joan Woods

Wayne and Sharon Workman
 Helen Wransky
 Beth Wright
 David Wright
 Katie Wright
 Morgan Wurtz
 The Wyklige Family
 Mary and David Yarbrough
 Pam Yee and Ron Gianola
 Ron and Marty Yocum
 Greta Yoder
 Frank and Ruth Zinn
 Kristin and Andrew Zlotnik
 Steven Zunes and Nanlouise Wolfe

Contributions from GTRCF Funds

American Waste Charitable Fund
 Chereskin Family Endowment
 Charlie and Linda Kehr Fund
 Wilfred and Joan Larson Endowment
 Larry and Joan Miller Endowment
 Mark and Helen Neithercut Fund
 Northwest Michigan Osteopathic Endowment
 Joyce and Bruce Rogers Family Fund
 Rotary Endowment
 Craig and Becky Tester Family Endowment
 Robert and Pauline Young Family Endowment
 Youth Endowment



“Thanks to the generosity of its many donor partners, the Community Foundation has made significant grants on an annual basis. The grants include dozens of scholarships to graduating high school seniors and grants to numerous nonprofit organizations which provide valuable services to the citizens of our five-county area. These grants will continue in perpetuity, assuring that the quality of life we experience in our corner of Northwest Michigan will be sustained for generations.”

Larry Nelson, Board Director, Leelanau County



community foundation

223 LAKE AVENUE, STE B
TRAVERSE CITY, MI 49684

We are celebrating our
30th anniversary this year!

Visit www.GTRCF.org to learn more.



BETTER GIVING FOR A
BETTER FUTURE

ANTRIM
BENZIE
GRAND TRAVERSE
KALKASKA
LEELANAU

GTRCF.ORG

231.935.4066